



BATTERY PROTECTOR

Lock energy and start at any time

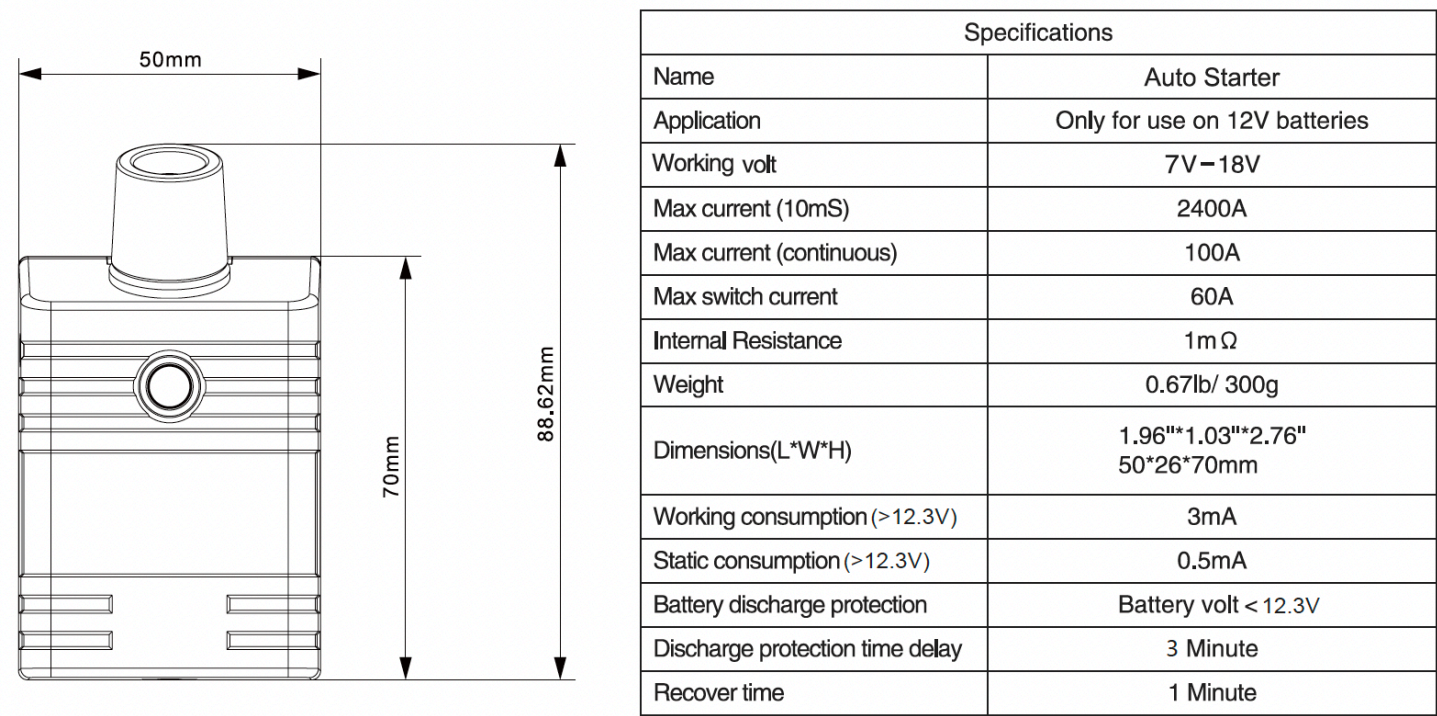
Owner's Manual

Accutron AG
Grindelstrasse 12
8303 Bassersdorf
Tel. 043 266 20 50
sales@accutron.ch
www.accutron.ch

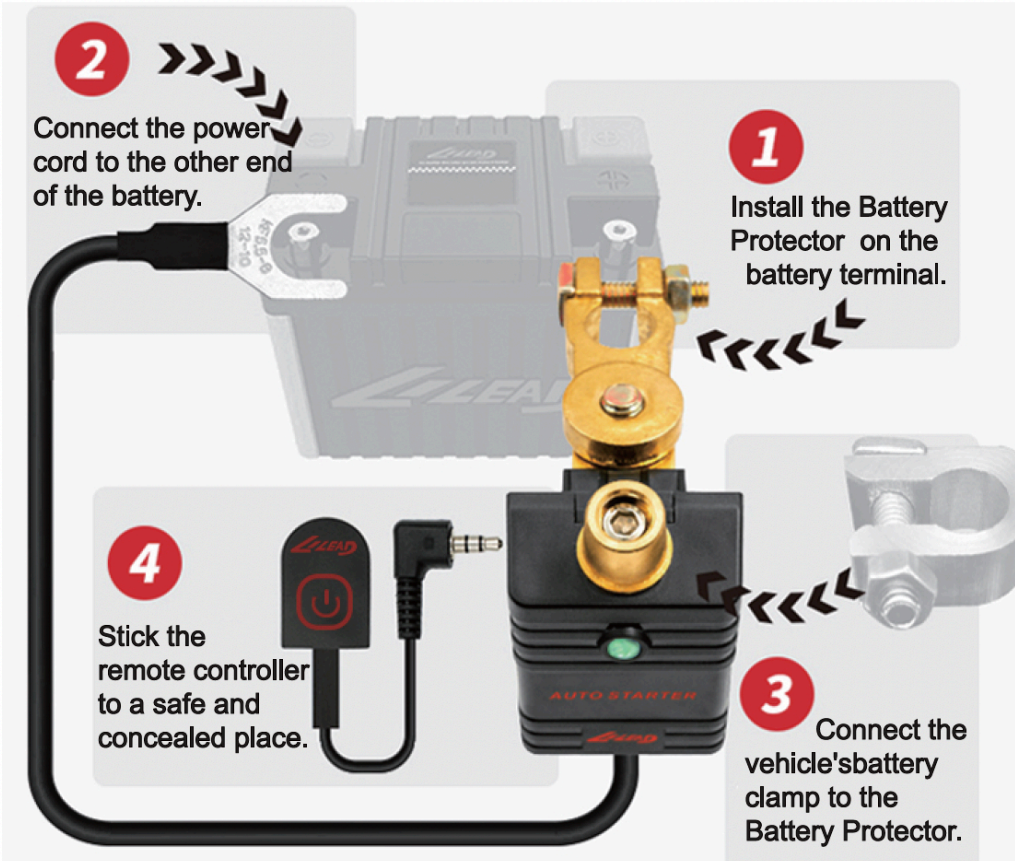
The product is the perfect solution for restarting a breakdown vehicles caused by dead battery, such as when the vehicle has not been used for 3 months, you forgot to turn off the lights, or there is an electrical short. All you need to do is to press the button, and the battery will recover for one minute. You are then able to start your vehicle.

You can also press remote controller for 5 seconds, then the product will cut off the battery electrical circuit.

TECH DATA & INSTALLATION INSTRUCTIONS:



INSTALLATION GUIDANCE:



Finally, insert the remote controller switch into the product, lead the switch out of the car, and stick it in a suitable position. Installed.

INVENTORY:

Parts Name	Product body	Remote controller	User manual	Qualified certificate
Qty	1	1	1	1

OPERATIONAL PRINCIPLE:

Normal battery voltage is more than 12.5V.
If the voltage<12.3V, and lasts for 3 minute, the product will cut off electrical output to ensure enough battery capacity to start vehicle.

You can press (A) remote control button or (B) button on the product or (C) use your cell phone bluetooth to connect the product. It can restore the battery in 3 minutes, allowing you to start the car within that time. Once vehicle starts, generator starts working and charges battery again. Battery voltage will keep increasing and return to normal.

WARNING:

1.The product doesn't contain batteries. It is a battery controller.the product can prevent battery over-discharge, prevent vehicle breakdown due to flat battery and prolong battery life.

The product cannot promote battery performance.

If battery inner structure is broken or as battery ages and its performance declines,the product can't put life back into a battery.

For example:

Before install the product		Suggestion
Battery Served	Vehicle breakdown by weak battery	
< 2 years	No	Ready to install the product
	Yes	Change battery first, then install the product
>2years	No, battery is strong	Ready to install the product
	No, battery is weak	Change battery first, then install the product
	Yes	
After install the product		Suggestion
Battery Served	The product protection	
< 1year	Protection ≥ 3 times	Please check battery status , or change battery, then keep using the product .
< 2 years	Protection ≥ 2 times	
> 2 years	Protection ≥ 1 time	

2.The product can endure 2400A (10mS) cranking current, 100A continuous current and it is suitable for regular vehicles. If vehicle needs to use heavy duty devices (such as a winch) and needs continuous current of 300A-500A, the product is not recommended.

3. Most vehicles cannot be affected when the power turns off. There are some possible phenomena and solutions when some vehicles are powered off as follows:

Category	Phenomenon	Solutions
Loss of memory	Loss of radio information	No additional operation required: the auto can automatically search for radio stations during the driving process.
	Inaccuracy of the clock	The mid- and high-end autos can automatically adjusted without additional operation, while economical autos may need to be set manually.
	Idle wobbling	No additional operation required: the vehicle ECU can automatically learn and adjust the ignition timing during the driving process.
Resetting	Failure of automatic window lifter of the Vehicle	When the window is closed, button up the rise key for 5 seconds, and then the automatic lifting function is reset.
Error code	Error code	Keep on driving normally until the destination, then restart the auto and the error code will disappear.

4. After installing the product, the external power can still be used to jump start the vehicle:
Please use a healthy battery (voltage > 12V) to jump start the vehicle;
Please do not connect the positive and negative electrode reversely;
The jumper cable should be clamped on the battery terminal of the vehicle (not on the battery post) or on the designated location of the vehicle.

INSTALLATION:

- Please choose proper product model: Positive model or Negative model.
- Vehicle current is high; make sure all connections are firmly attached.
- When installing the product to the positive terminal of the battery, please note that the metal connected to the positive electrode of the battery must be apart from the metal of body. Because the metal of the body is connected to the negative electrode of the battery. If positive electrode and the negative electrode are in direct connection, a short circuit will occur, which will damage the battery and cause safety accidents like fire.
- Position remote control button in a safe, reachable and sheltered place. DO NOT interfere with camera, or the windscreen wiper's operations etc.

- Make sure the switch cable is attached firmly to a stable position.

WARRANTY:

The product is guaranteed to be free from defects in material and workmanship under normal use and conditions as follows:

7-day unconditional return,
30-day free replacement,
1 years warranty.

The warranty does not cover the following situations:

- 1.No after-sales service card.
- 2.Damage appearance or malfunction due to collision.
- 3.Unauthorized modification or any attempt to disassemble or interfere with the product in any way.
- 4.Exceeding the product technical data.

If the product is damaged beyond the warranty period, our company will not perform after-sales maintenance on the product.

For post sales service, please contact local distributor.

Please fill in below information, or your warranty will be refused.

User's name: _____

User's Phone No.: _____

User's vehicle: _____

Purchasing date: _____